

# What you'll need

## Materials

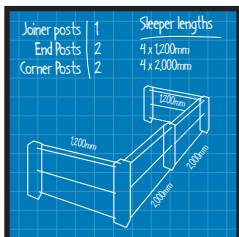
- ☐ Retain-iT posts
- ☐ Quick setting concrete
- ☐ Timber sleepers

## Tools

- ☒ Measuring tape
- ☒ Level & string line
- ☒ Shovel or post-hole digger

## Step 1

### Design and plan



#### Handy Tip

Designed with 15° tolerance, so you can create 'curved' walls at special angles

Measure your planned space, and design the layout of your retaining wall on paper. Remember to include the heights.

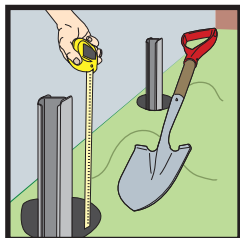
Determine the post sections and number of posts required by referring to the Product Selection Guide.

#### Top-down view



## Step 2

### Prepare the site



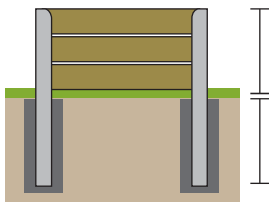
#### Handy Tip

Concrete one post at a time adding sleepers as you go to ensure a straight wall

Clear the area and mark out the run of your wall and the position of your posts.

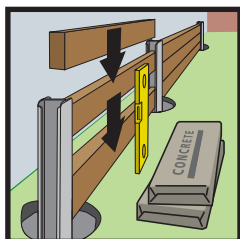
Dig holes for each post, and double check that your sleepers will fit snugly.

For stability, the posts should be approximately halfway below ground and half-way above. Walls with shallow foundations will be less stable.



## Step 3

### Build and concrete



#### Handy Tip

For a different finish, add a layer of timber capping to the top of the wall.

Use a level and string line to ensure posts are straight and upright.

Pour concrete to set the post at the correct height and spacing – a quick-setting concrete is recommended.

Insert your timber sleepers and move on to the next post until your retaining wall is complete.

**The galvanised steel is suitable for use with quick-setting or regular concrete.**

#### Please note:

Information in this document is a guide only and we do not warrant the accuracy or the completeness of that information. Whites Group excludes all liability in relation to the statements in this brochure. Australian Design Registered components.