







PRODUCT SIZE		WALL HEIGHT	HOW MANY HIGH	WEIGHT KG	RETAIL
FOR USE WITH 50MM SLEEPERS					
RETAIN-IT END POST 50X450MM	 End Post	200mm	1	1.4	\$12.66
RETAIN-IT END POST 50X750MM		400mm	2	2.3	\$21.48
RETAIN-IT END POST 50X1100MM		600mm	3	3.4	\$31.75
RETAIN-IT JOINER POST 50X450MM	 Joiner Post	200mm	1	2.8	\$25.30
RETAIN-IT JOINER POST 50X750MM		400mm	2	4.7	\$42.29
RETAIN-IT JOINER POST 50X1100MM		600mm	3	6.8	\$62.17
RETAIN-IT CORNER POST 50X450MM	 Corner Post	200mm	1	2.8	\$25.86
RETAIN-IT CORNER POST 50X750MM		400mm	2	4.7	\$43.61
RETAIN-IT CORNER POST 50X1100MM		600mm	3	6.8	\$63.46
FOR USE WITH 75MM SLEEPERS					
RETAIN-IT END POST 75X450MM	 End Post	200mm	1	1.6	\$14.57
RETAIN-IT END POST 75X750MM		400mm	2	2.7	\$24.22
RETAIN-IT END POST 75X1100MM		600mm	3	3.9	\$35.28
RETAIN-IT JOINER POST 75X450MM	 Joiner Post	200mm	1	3.2	\$29.41
RETAIN-IT JOINER POST 75X750MM		400mm	2	5.4	\$48.14
RETAIN-IT JOINER POST 75X1100MM		600mm	3	7.9	\$70.12
RETAIN-IT CORNER POST 75X450MM	 Corner Post	200mm	1	3.2	\$30.82
RETAIN-IT CORNER POST 75X750MM		400mm	2	5.4	\$49.71
RETAIN-IT CORNER POST 75X1100MM		600mm	3	7.9	\$73.27

Available in three heights to suit 50mm and 75mm sleeper depths

1
SLEEPER HEIGHT
200mm wall, 450mm post

2
SLEEPER HEIGHT
400mm wall, 750mm post

3
SLEEPER HEIGHT
600mm wall, 1100mm post

Nuway
LANDSCAPE SUPPLIES
PAVERS AND WALLS

Scan QR code to view details on all Nuway store's



ASHMORE
PH: 5597 3433
ashmore@nuway.com.au

MANGO HILL
PH: 3491 6372
mangohill@nuway.com.au

BURPENGARY
PH: 3888 8806
burpengary@nuway.com.au

ORMEAU
PH: 5546 7703
ormeau@nuway.com.au

CHANDLER
PH: 3390 2477
chandler@nuway.com.au

PINE RIVERS
PH: 3881 1447
pinerivers@nuway.com.au

FORESTDALE
PH: 3800 5433
forestdale@nuway.com.au

REDLANDS
PH: 3207 7800
redlands@nuway.com.au

LOGAN
PH: 3808 8442
logan@nuway.com.au

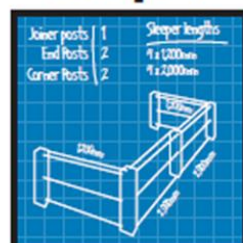
WESTERNS
PH: 3715 6200
western@nuway.com.au

What you'll need

Materials	Tools
<input type="checkbox"/> Retain-IT posts	<input type="checkbox"/> Measuring tape
<input type="checkbox"/> Quick setting concrete	<input type="checkbox"/> Level & string line
<input type="checkbox"/> Timber sleepers	<input type="checkbox"/> Shovel or post-hole digger

Step 1

Design and plan



Handy Tip

Designed with 15° tolerance, so you can create 'curved' walls at special angles

Measure your planned space, and design the layout of your retaining wall on paper. Remember to include the heights.

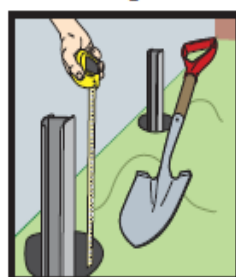
Determine the post sections and number of posts required by referring to the Product Selection Guide.

Top-down view



Step 2

Prepare the site



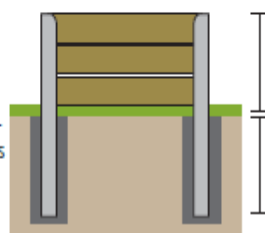
Handy Tip

Concrete one post at a time adding sleepers as you go to ensure a straight wall

Clear the area and mark out the run of your wall and the position of your posts.

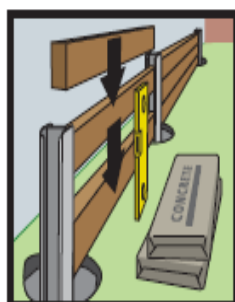
Dig holes for each post, and double check that your sleepers will fit snugly.

For stability, the posts should be approximately halfway below ground and half-way above. Walls with shallow foundations will be less stable.



Step 3

Build and concrete



Handy Tip

For a different finish, add a layer of timber capping to the top of the wall.

Use a level and string line to ensure posts are straight and upright.

Pour concrete to set the post at the correct height and spacing – a quick-setting concrete is recommended.

Insert your timber sleepers and move on to the next post until your retaining wall is complete.

The galvanised steel is suitable for use with quick-setting or regular concrete.