

QUEENSLAND RED CYPRESS BARK & MULCH FACT SHEET

Queensland Red Cypress Bark & Mulch is a premium quality garden mulch rich in colour that beautifully enhances any type of garden. It is a natural deterrent of harmful insects, including termites and cockroaches (including the West-Indian termite). This mulch retains its colour and has a slow break-down rate, and is:

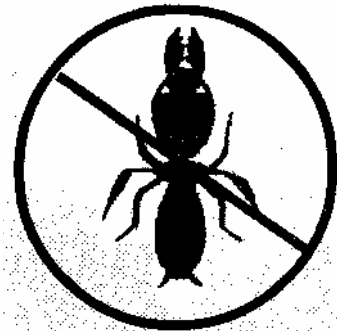
- **Vibrant red-brown colour, great for contrast with plantings**
- **Rich in texture; and**
- **Possesses excellent water holding properties**

WHAT ARE its USES?

Red Cypress Bark & Mulch is an excellent product to use in white ant areas, and is well-suited for steep slopes and windy areas.

HOW IS IT APPLIED?

For maximum benefit, Queensland Red Cypress Bark & Mulch should be placed on top of the garden to a minimum depth of 100mm for it to produce the desired results.



WHAT ARE ITS BENEFITS?

Red Cypress Bark & Mulch will:

- **Help to retain moisture in the garden**
- **Controls and suppresses weed growth**
- **Helps regulate soil temperature**
- **Enhance the visual appearance of any garden environment, and is completely safe to use around all plant types as it is pH neutral**