

<b>LIMESTONE PAVER</b>	<b>NO./PLT</b>	<b>KG EA</b>	<b>NO./M2</b>	<b>RRP EA</b>	<b>RRP M2</b>
200x400x40mm - (Beech, Charcoal, Ivory, Macchiato, Moody Grey & Suede)	144	7kg	12.5	\$5.79	\$72.38
400x400x40mm - (Beech, Charcoal, Ivory, Macchiato, Moody Grey & Suede)	108	14kg	6.25	\$10.08	\$63.00
500x500x40mm - (Beech, Charcoal, Ivory, Macchiato, Moody Grey & Suede)	60	25kg	4	\$16.55	\$66.20
600x600x40mm - (Beech, Charcoal, Ivory, Macchiato, Moody Grey & Suede)	48	38kg	2.77	\$34.76	\$96.29
600x300x45mm - (Beech, Charcoal, Ivory, Macchiato, Moody Grey & Suede)	96	17kg	5.54	\$17.39	\$96.34
<b>RIVENSTONE PAVER</b>	<b>NO./PLT</b>	<b>KG EA</b>	<b>NO./M2</b>	<b>RRP EA</b>	<b>RRP M2</b>
200x400x40mm - (Beech, Charcoal, Ivory, Macchiato, Moody Grey & Suede)	144	7kg	12.5	\$5.79	\$72.38
400x400x40mm - (Beech, Charcoal, Ivory, Macchiato, Moody Grey & Suede)	108	14kg	6.25	\$11.56	\$72.25
<b>TRAVERTINE PAVER</b>	<b>NO./PLT</b>	<b>KG EA</b>	<b>NO./M2</b>	<b>RRP EA</b>	<b>RRP M2</b>
500x500x40mm - (Beech, Charcoal, Ivory & Macchiato)	60	25kg	4	\$15.33	\$61.32
600x400x40mm - (Chalk & Charcoal)	72	25kg	4.16	\$17.84	\$74.21
<b>TUSCANY PAVER</b>	<b>NO./PLT</b>	<b>KG EA</b>	<b>NO./M2</b>	<b>RRP EA</b>	<b>RRP M2</b>
400x400x40mm - (Beech, Ivory, Macchiato, Moody Grey & Suede)	108	14kg	6.25	\$11.56	\$72.25
600x400x40mm - (Beech, Ivory, Macchiato, Moody Grey & Suede)	72	25kg	4.16	\$19.02	\$79.12
<b>TERRAIN PAVER</b>	<b>NO./PLT</b>	<b>KG EA</b>	<b>NO./M2</b>	<b>RRP EA</b>	<b>RRP M2</b>
400x400x40mm - (Chalk, Charcoal, Macchiato, Moody Grey, Outback & Sands)	108	14kg	6.25	\$10.08	\$63.00
<b>QUARTZ PAVER</b>	<b>NO./PLT</b>	<b>KG EA</b>	<b>NO./M2</b>	<b>RRP EA</b>	<b>RRP M2</b>
450x450x40mm - (Chalk, Charcoal & Sands)	60	18.2kg	4.94	\$13.42	\$66.29
<b>SANDSTONE PAVER</b>	<b>NO./PLT</b>	<b>KG EA</b>	<b>NO./M2</b>	<b>RRP EA</b>	<b>RRP M2</b>
600x400x40mm - (Chalk, Charcoal, Macchiato & Sahara)	72	25kg	4.16	\$16.95	\$70.51
<b>ST TROPEZ PAVER</b>	<b>NO./PLT</b>	<b>KG EA</b>	<b>NO./M2</b>	<b>RRP EA</b>	<b>RRP M2</b>
400x400x40mm - (Chalk, Macchiato, Moody Grey & Sands)	108	14kg	6.25	\$11.56	\$72.25
600x400x40mm - (Chalk, Macchiato, Moody Grey & Sands)	72	25kg	4.16	\$17.32	\$72.05
<b>ST TROPEZ PAVER SET (0.72 M2)</b>	<b>NO./PLT</b>	<b>KG /SET</b>	<b>NO./M2</b>	<b>RRP /SET</b>	<b>RRP M2</b>
(Chalk, Macchiato, Moody Grey & Sands)	24 sets	74kg	0.72	\$57.03	\$79.21
<b>ST TROPEZ PAVER SET - Must be ordered by sets of 0.72m2. To Calculate how may sets to order, divide the area by 0.72. ie. For an area of 50m2, you will need 69.44 sets (50/0.72= 69.4) - round up to 70 sets</b> 1 Set = 1 x 600x400, 2 x 400x400, 2 x 200x200, 1 x 400x200.					
<b>NOOSAPAVE</b>	<b>NO./PLT</b>	<b>KG EA</b>	<b>NO./M2</b>	<b>RRP EA</b>	<b>RRP M2</b>
200x100x40mm - (Chalk & Charcoal)	720	1.75kg	50	\$1.49	\$74.50
<b>EUROPAVE PAVER</b>	<b>NO./PLT</b>	<b>KG EA</b>	<b>NO./M2</b>	<b>RRP EA</b>	<b>RRP M2</b>
Approx. 295x400x40mm (Platinum & Crema)	210	6.3kg	13.5	\$5.87	\$79.25

**ASHMORE**

PH: 5597 3433  
ashmore@nuway.com.au

**BUDERIM**

PH: 5445 2173  
buderim@nuway.com.au

**BURPENGARY**

PH: 3888 8806  
burpengary@nuway.com.au

**CHANDLER**

PH: 3390 2477  
chandler@nuway.com.au

**FORESTDALE**

PH: 3800 5433  
forestdale@nuway.com.au

**LOGAN**

PH: 3808 8442  
logan@nuway.com.au



**MANGO HILL**

PH: 3491 6372  
mangohill@nuway.com.au

**ORMEAU**

PH: 5546 7703  
ormeau@nuway.com.au

**PINE RIVERS**

PH: 3881 1447  
pinerivers@nuway.com.au

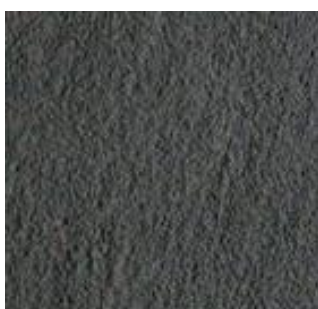
**REDLANDS**

PH: 3207 7800  
redlands@nuway.com.au

**WESTERNS**

PH: 3715 6200  
western@nuway.com.au

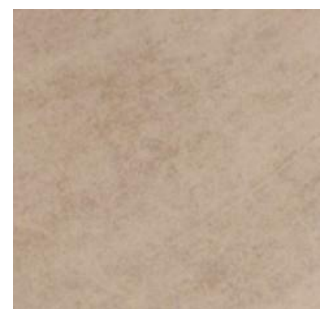
<b>TRAVESTONE COBBLE PAVER</b>	<b>NO./PLT</b>	<b>KG EA</b>	<b>NO./M2</b>	<b>RRP EA</b>	<b>RRP M2</b>
500x360x45mm - (Crema)	72	17kg	5.55	\$14.26	\$79.14
<b>TRAVESTONE COBBLE BORDER</b>	<b>NO./PLT</b>	<b>KG EA</b>	<b>NO./M</b>	<b>RRP EA</b>	<b>RRP L/M</b>
480x115x45mm - (Charcoal)	130	5.4kg	2.08	\$10.49	\$21.82
<b>BLACKBUTT PAVER</b>	<b>NO./PLT</b>	<b>KG EA</b>	<b>NO./M2</b>	<b>RRP EA</b>	<b>RRP M2</b>
800x400x40mm - (Driftwood & Copper)	36	28kg	-	\$27.69	-
<b>TIMBERSTONE PAVER</b>	<b>NO./PLT</b>	<b>KG EA</b>	<b>NO./M2</b>	<b>RRP EA</b>	<b>RRP M2</b>
800x230x40mm - (Driftwood & Copper)	60	16.2kg	5.43	\$16.43	\$89.21
230x230x40mm - (Driftwood & Copper)	120	4.5kg	18.9	\$4.86	\$91.85
Fine Grain 900x275x40mm - (Driftwood & Copper)	60	22kg	4.04	\$23.81	\$96.19
<b>REEFSTONE PAVER &amp; STEPPER</b>	<b>NO./PLT</b>	<b>KG EA</b>	<b>NO./M2</b>	<b>RRP EA</b>	<b>RRP M2</b>
Paver 800x400x40mm - (Chalk, Charcoal & Macchiato)	36	28kg	-	\$24.79	-
Radius Stepper 800x400x40mm - (Chalk, Charcoal)	36	27kg	-	\$27.69	-
Radius Stepper 1000x400x40mm - (Chalk, Charcoal)	36	33kg	-	\$38.10	-
<b>BUSH STONE STEPPER</b>	<b>NO./PLT</b>	<b>KG EA</b>	<b>NO./M2</b>	<b>RRP EA</b>	<b>RRP M2</b>
700x410x40mm - (Charcoal)	45	25kg	-	\$24.97	-
<b>RIVER STONE STEPPER</b>	<b>NO./PLT</b>	<b>KG EA</b>	<b>NO./M2</b>	<b>RRP EA</b>	<b>RRP M2</b>
Approx. 300X270x40mm - (Chalk & Moody Grey)	116	4.8kg	-	\$8.63	-
<b>ALPINE STEPPERS</b>	<b>NO./PLT</b>	<b>KG EA</b>	<b>NO./M2</b>	<b>RRP EA</b>	<b>RRP M2</b>
Approx. 480x40mm Diameter - (Charcoal, Macchiato & Sands)	35	15kg	-	\$16.49	-
<b>BABYLON STEPPERS</b>	<b>NO./PLT</b>	<b>KG EA</b>	<b>NO./M2</b>	<b>RRP EA</b>	<b>RRP M2</b>
Approx. 500X500x40mm - (Chalk, Charcoal & Sands)	60	22kg	-	\$25.11	-
<b>LUNAR STEPPER</b>	<b>NO./PLT</b>	<b>KG EA</b>	<b>NO./M2</b>	<b>RRP EA</b>	<b>RRP M2</b>
Circle 400mm Diameter - (Chalk & Moody Grey)	108	11kg	-	\$11.56	-
Circle 500mm Diameter - (Chalk & Moody Grey)	60	18kg	-	\$19.15	-
Circle 600mm Diameter - (Chalk & Moody Grey)	48	25kg	-	\$33.02	-
<b>COBBLE &amp; PEBBLE BORDER'S</b>	<b>NO./PLT</b>	<b>KG EA</b>	<b>NO./M2</b>	<b>RRP EA</b>	<b>RRP M2 / L</b>
Cobble 100x100x40mm - (Beech, Charcoal, Ivory, Macchiato, Moody Grey & Suede)	1500	1kg	100 m2	\$1.08	\$108.00
Cobble 400x100x40mm - (Beech, Charcoal, Ivory, Macchiato, Moody Grey & Suede)	288	4kg	2.5 l/m	\$9.96	\$24.90
Pebble 400x100x40mm - (Beech, Charcoal, Ivory, Macchiato, Moody Grey & Suede)	288	4kg	2.5 l/m	\$9.96	\$24.90
<b>BUSHSTONE GARDEN EDGE</b>	<b>NO./PLT</b>	<b>KG EA</b>	<b>NO./M2</b>	<b>RRP EA</b>	<b>RRP M2</b>
500x100x100mm - (Charcoal & Sands)	108	11.6kg	-	\$11.53	-



RIVENSTONE  
CHARCOAL



TUSCANY  
IVORY



LIMESTONE  
MACCHIATO

<b>RIVENSTONE BULLNOSE *Side with BN</b>	<b>NO. /PLT</b>	<b>KG EA</b>	<b>NO./ L/M</b>	<b>RRP EA</b>	<b>RRP L/M</b>
*400X400X40MM	108	14kg	2.5	\$18.10	\$45.25
*400X230X40MM	72	8kg	2.5	\$18.10	\$45.25
<b>LIMESTONE BULLNOSE *Side with BN</b>	<b>NO. /PLT</b>	<b>KG EA</b>	<b>NO./ L/M</b>	<b>RRP EA</b>	<b>RRP L/M</b>
*200X400X40MM	72	7kg	5	\$9.07	\$45.35
*400X360X40MM	72	11kg	2.5	\$18.10	\$45.25
*400X400X40MM	72	14kg	2.5	\$18.10	\$45.25
*400X250X40MM	72	8kg	2.5	\$18.10	\$45.25
*600X400X40MM	48	25kg	1.66	\$33.31	\$55.29
<b>TUCANY BULLNOSE *Side with BN</b>	<b>NO. /PLT</b>	<b>KG EA</b>	<b>NO./ L/M</b>	<b>RRP EA</b>	<b>RRP L/M</b>
*400X400X40MM	72	14kg	2.5	\$18.10	\$45.25
*600X400X40MM	48	25kg	1.66	\$33.31	\$55.29
<b>TRAVERTINE BULLNOSE *Side with BN</b>	<b>NO. /PLT</b>	<b>KG EA</b>	<b>NO./ L/M</b>	<b>RRP EA</b>	<b>RRP L/M</b>
*500X360X40MM	48	20kg	2	\$24.97	\$49.94
*600X400X40MM	48	20kg	1.66	\$42.24	\$70.12
<b>TERRAIN BULLNOSE</b>	<b>NO. /PLT</b>	<b>KG EA</b>	<b>NO./ L/M</b>	<b>RRP EA</b>	<b>RRP L/M</b>
400X400X40MM	72	14kg	2.5	\$18.10	\$45.25
<b>SANDSTONE BULLNOSE *Side with BN</b>	<b>NO. /PLT</b>	<b>KG EA</b>	<b>NO./ L/M</b>	<b>RRP EA</b>	<b>RRP L/M</b>
*600X420X40MM	48	25kg	1.66	\$33.31	\$55.29
<b>ST TOPEZ BULLNOSE *Side with BN</b>	<b>NO. /PLT</b>	<b>KG EA</b>	<b>NO./ L/M</b>	<b>RRP EA</b>	<b>RRP L/M</b>
*600X400X40MM	48	25kg	1.66	\$33.31	\$55.29

**DELIVERIES:**

**BISBANE**

Minimum delivery - 1 to 2 pallets \$138.00  
 Every other pallet thereafter \$40.00

**SUNSHINE COAST TO YANDINA/YAROOMBA**

Minimum delivery - 1 to 2 pallets \$192.00  
 Every other pallet thereafter \$40.00

**NORTH YANDINA TO TEWANTIN**

Minimum delivery - 1 to 2 pallets \$202.00  
 Every other pallet thereafter \$40.00

**GOLD COAST TO ROBINA**

Minimum delivery - 1 to 2 pallets \$192.00  
 Every other pallet thereafter \$40.00

**ROBINA TO TWEED HEADS**

Minimum delivery - 1 to 2 pallets \$202.00  
 Every other pallet thereafter \$40.00



ALPINE



COBBLE



TIMBERSTONE