

Nuway Concrete Sleepers

1/06/2020



| SLEEPER SIZE | SURFACE | KG | PRICE RETAIL PLAIN | RETAIL *COLOURED SEALED |
|--------------|----------------------------------|-------|--------------------------|-------------------------------|
| 1.48X200X85 | SMOOTH | 60KG | \$26.73 | \$32.67 |
| 1.48X200X80 | DRIFTWOOD | 60KG | \$29.70 | \$35.64 |
| 1.48X200X80 | GRANITE STONE | 60KG | \$29.70 | \$35.64 |
| 1.98X200X85 | SMOOTH | 80KG | \$28.96 | \$34.90 |
| 1.98X200X80 | GRANITE STONE | 80KG | \$32.67 | \$38.61 |
| 1.98X200X80 | DRIFTWOOD | 80KG | \$32.67 | \$38.61 |
| 1.98X200X75 | *ROCKPOOL | 80KG | \$35.64 | \$41.58 |
| 1.98X200X75 | *BUBBLES | 80KG | \$35.64 | \$41.58 |
| 1.98X200X75 | *HONEYCOMB | 80KG | \$35.64 | \$41.58 |
| 2.38X200X100 | SMOOTH | 120KG | \$38.61 | \$44.55 |
| 2.365X210X65 | SMOOTH (Suits colourbond fences) | 73KG | \$35.64 | \$41.58 |
| 2.98X200X125 | SMOOTH | 192KG | \$78.71 | \$84.65 |



SMOOTH



ROCKPOOL



DRIFTWOOD



BUBBLES



HONEYCOMB



GRANITE STONE

| POSTS GALV. STEEL (UC100) | TYPE OF POST | PRODUCT CODE | KG | PRICE RETAIL |
|------------------------------|------------------------------------|-----------------|-------|-----------------|
| 400 | H POST (used for 200mm high wall) | N6653 | 5.92 | \$20.20 |
| 400 | C POST (used for 200mm high wall) | N6654 | 4 | \$14.90 |
| 800 | H POST (used for 400mm high wall) | N6655 | 11.84 | \$40.40 |
| 800 | C POST (used for 400mm high wall) | N6656 | 8 | \$29.70 |
| 1200 | H POST (used for 600mm high wall) | N6657 | 17.76 | \$60.60 |
| 1200 | C POST (used for 600mm high wall) | N6658 | 12 | \$44.60 |
| 1600 | H POST (used for 800mm high wall) | N6659 | 23.68 | \$80.80 |
| 1600 | C POST (used for 800mm high wall) | N6660 | 16 | \$59.40 |
| 2000 | H POST (used for 1000mm high wall) | N6661 | 29.6 | \$101.00 |
| 2000 | C POST (used for 1000mm high wall) | N6662 | 20 | \$74.30 |
| 2400 | H POST (used for 1200mm high wall) | N6663 | 35.52 | \$121.20 |
| 2400 | C POST (used for 1200mm high wall) | N6664 | 24 | \$89.10 |
| 2800 | H POST (used for 1400mm high wall) | N6665 | 41.44 | \$141.40 |
| 2800 | C POST (used for 1400mm high wall) | N6666 | 28 | \$104.00 |
| 3200 | H POST (used for 1600mm high wall) | N6667 | 47.36 | \$161.60 |
| 3200 | C POST (used for 1600mm high wall) | N6668 | 32 | \$118.80 |
| 3600 | H POST (used for 1800mm high wall) | N7008 | 53.28 | \$181.80 |
| 3600 | C POST (used for 1800mm high wall) | N7009 | 36 | \$133.70 |

| SIZE | BRACKET | PRODUCT CODE | PRICE RETAIL |
|------|------------------------|-----------------|-----------------|
| 6MM | Fence Bracket | N6669 | \$22.30 |
| 6MM | Fence Bracket (offset) | N6950 | \$26.80 |
| 3MM | Fence Bracket | N6670 | \$19.40 |

***COLOURED SEALING**
Available colours:
Desert Sand
Monument
Chocolate

DELIVERY: Freight to be quoted on application. Nuway Staff to get a quote from supplier

* Bubbles, Rockpool & Honeycomb textures are made to order with a output of 4 sleepers per day.

REDLANDS
PH: 3207 7800

249 Cleveland-
Redland-Bay Rd
Thorntlands 4164

ASHMORE
PH: 5597 3433

650 Southport
-Nerang Rd
(opp. BP Station)
Ashmore 4214

CHANDLER
PH: 3390.2477

2630 Old -
Cleveland Rd
(cnr Aldis Rd)
Chandler 4155

FORESTDALE
PH: 3800 5433

2-16 Stapylton Rd
Forestdale 4118

LOGAN
PH: 3808 8442

488 Loganlea Rd
Slacks Creek 4127

BURPENGARY
PH: 3888 8806

8A 1 Commerce Pl
(cnr North Shore Dr)
Burpengary 4505

MANGO HILL
PH: 3491 6372

1823 Anzac Ave
Mango Hill 4509

**WESTERN
SUBURBS**
PH: 3715 6200

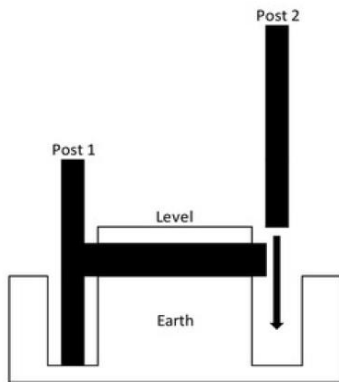
12 Jennifer St
Seventeen Mile Rocks
4073

NUWAY CONCRETE SLEEPERS CONCRETE RETAINING WALL SYSTEM INSTALLATION GUIDE

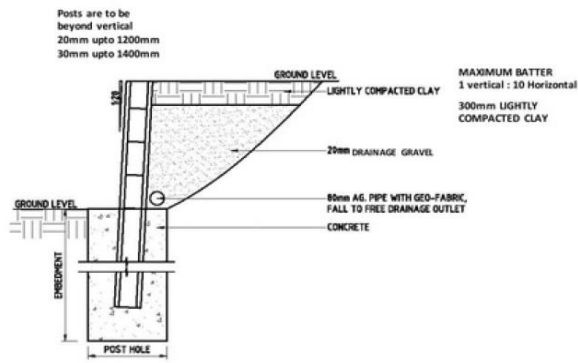
This guide is a basic outline of how to install a NUWAY concrete retaining wall. DURAWALL accepts no responsibility in regards to the DIY installation of a wall, or for any issues that occur as a result of an incorrect DIY installation. For large walls, engineering advice should be sought to ensure structural integrity.



Using a string line, set out post holes to suit sleeper length. Holes are dug at 450mm diameter for all walls up to 1.6m. Hole depth is equal to wall height plus 200mm.



(Fig. 1)



(Fig. 2)

Starting at one end, place a post in the hole. Post should be plumb laterally and leaning as per diagram. Place in sleeper or suitable spacer before inserting second post. Continue this process until all posts are standing.

Pour concrete into each post hole and bring up to the base of the bottom of wall height. After curing load up required sleepers.

Place geo fabric behind wall to prevent silt build-up and install aggr pipe at base. Backfill drainage gravel to the required height.



Fencing can be installed on fence brackets that are provided by NUWAY. For walls under 1.0m ensure posts are at least 1.0m in the ground.