

CONCRETE RETAINING WALL SYSTEMS

INSTALLATION GUIDE

DIY OR WE CAN HANDLE THE COMPLETE PROCESS FOR YOU

DURAWALL's slim profile and simple design enables it to be easily installed by either yourself or by our QBCC licensed team of installers

This guide is a basic outline of how to install a DURAWALL concrete retaining wall.

DURAWALL accepts no responsibility in regards to the DIY installation of a wall, or for any issues that occur as a result of an incorrect DIY installation.

For large walls, engineering advice should be sought to ensure structural integrity.

TYPICAL SCENARIO

Existing natural timber or masonry retaining wall and fence requiring replacement due to damage or deterioration.



STEP 1



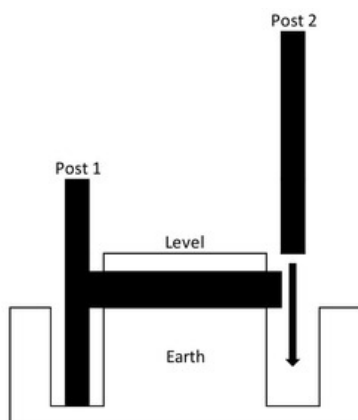
The existing timber wall and fence comes down and is taken by tip truck for removal off site.

STEP 2

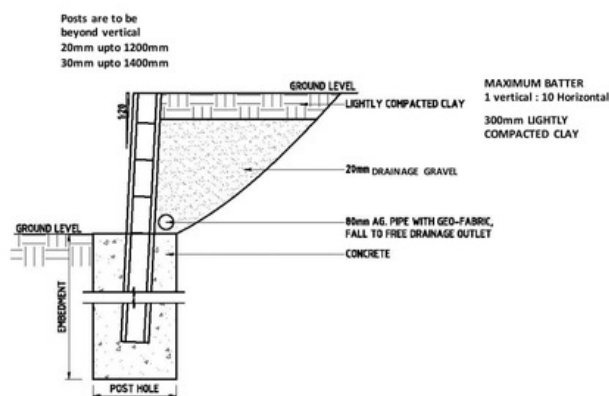


Using a string line, set out post holes to suit sleeper length. Holes are dug at 450mm diameter for all walls up to 1.6m. Hole depth is equal to wall height plus 200mm.

STEP 3



(Fig. 1)



(Fig. 2)

Starting at one end, place a post in the hole. Post should be plumb laterally and leaning as per diagram. Place in sleeper or suitable spacer before inserting second post. Continue this process until all posts are standing.

STEP 4

Pour concrete into each post hole and bring up to the base of the bottom of wall height. After curing load up required sleepers.



STEP 5

Place geo fabric behind wall to prevent silt build-up and install aggr pipe at base. Backfill drainage gravel to the required height.



STEP 6



Fencing can be installed on fence brackets that are provided by DURAWALL. For walls under 1.0m ensure posts are at least 1.0m in the ground.