



NATURAL IMPRESSIONS®
DUOSTONE

Natural Impressions® Duostone



Natural Impressions® Duostone | Graphite

BENEFITS

- ✓ Contemporary profile features contrasting textural finishes on the same unit
- ✓ Three block profiles to create a random and natural looking wall
- ✓ Suitable for use with Torpedo™ Base Block

Duostone is a designer garden wall ideal for edging and retaining walls. The unique block profile features a contrast of a natural stone-like texture and a contemporary, smooth surface with the random fusion resulting in finished walls that boast a modern architectural appeal.

The new ultra rich Graphite colour is a super black crafted using premium oxides for deep colour and consistency.

RECOMMENDED FOR



Straight Walls



Curved Walls



Garden Beds



Steps



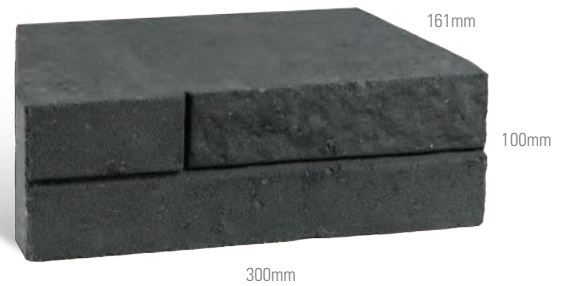
Set Back Walls



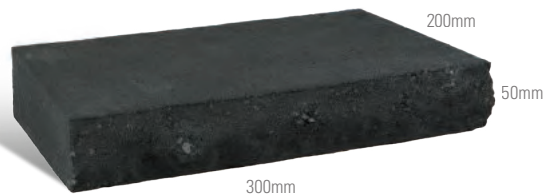
Garden Edging



AVAILABLE PRODUCTS



Natural Impressions® Duostone
33.33 units per m²

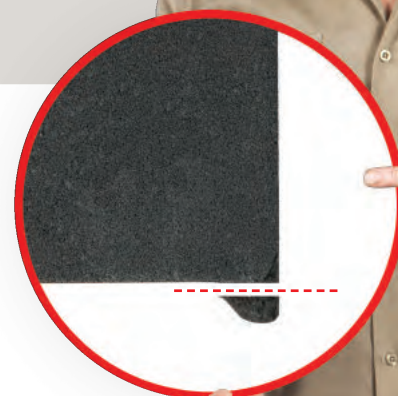


Natural Impressions® Duostone Cap
3.33 units per m²

Maximum unreinforced height 800mm plus cap (8 courses)

‘Remember to knock off the lug on the first course to ensure a level and stable wall’

Jason Hodges
Landscaping Expert

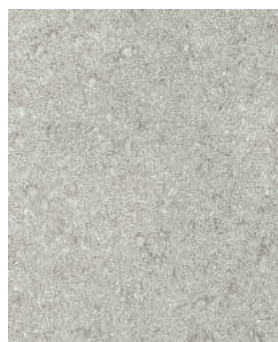


COLOUR OPTIONS

GRAPHITE



ASH





BRICKS



BESSER® BLOCKS



PAVERS



RETAINING WALLS